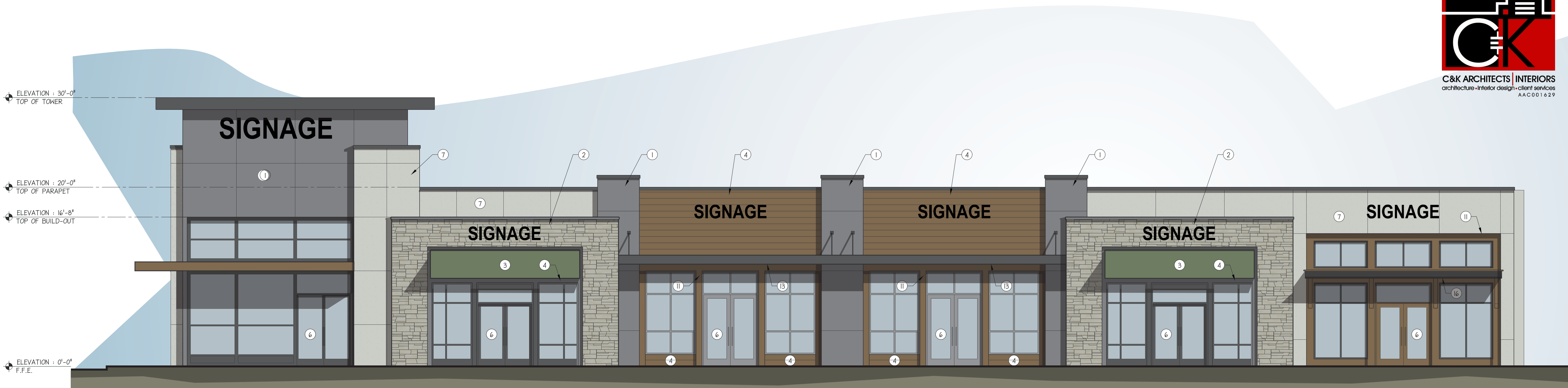


HAMLIN GROVES TRAIL COMMERCIAL OUTPARCEL



1 FRONT ELEVATION - BUILDING 1
SCALE: 3/16" = 1'-0"



2 REAR ELEVATION - BUILDING 1
SCALE: 3/16" = 1'-0"

○	KEYNOTES	○
1.	ALUMINUM COMPOSITE MATERIAL WALL PANELS.	
2.	NATURAL THIN STONE VENEER.	
3.	FABRIC AWNING.	
4.	COMPOSITE HORIZONTAL SIDING.	
5.	DECORATIVE ALUMINUM LOUVERED SHUTTER.	
6.	GLAZED ALUMINUM STOREFRONT SYSTEM.	
7.	STUCCO FINISH.	
8.	BRICK VENEER.	
9.	CORRUGATED METAL PANELS.	
10.	SQUARE, MODULAR METAL PANEL WALL SYSTEM.	
11.	BRAKE METAL SIDING.	
12.	ALUMINUM COMPOSITE MATERIAL CANOPY.	
13.	METAL BLADE AWNING.	
14.	CAST STONE VENEER.	
15.	CORRUGATED METAL AWNING.	
16.	COMPOSITE CANOPY W/ STRUCTURAL WOOD SUPPORT BRACKETS.	

PROJECT ADDRESS: HAMLIN GROVES TRAIL - HAMLIN TOWN CENTER

PROJECT NUMBER: 18057

CLIENT NAME: RAVE COMMERCIAL

4221 WEST BOY SCOUT BLVD., SUITE 150 • TAMPA, FL. 33607-5743
280 WEST CENTRAL AVE. • WINTER HAVEN, FL. 33880

VOICE: 813.882.2000
VOICE: 863.577.2054

WEBSITE: WWW.CK-ARCH.COM
AA C001629

REVISIONS:

DATE: 08.27.2018

SHEET NO:

A-1

DATE: 8/24/2018 10:41 PM, USER: JEREMY HUGHES, PLOTSCALE: 1/16" = 1'-0", FILE PATH: P:\18057-HAMLIN TOWN CENTER OUTPARCEL\BASE\ELEV\18057.DWG

CONFIDENTIAL NOTICE: THE INFORMATION CONTAINED IN THIS DRAWING MAY CONSTITUTE CONFIDENTIAL INFORMATION. IF YOU ARE NOT THE INTENDED RECIPIENT, PLEASE ADVISE THE ORIGINATOR IMMEDIATELY BY RETURNING THIS DRAWING TO THE ORIGINATOR. NO PART OF THIS DRAWING IS TO BE REPRODUCED, COPIED, OR TRANSMITTED IN ANY FORM OR BY ANY MEANS, ELECTRONIC OR MECHANICAL, INCLUDING PHOTOCOPYING, RECORDING, OR BY ANY INFORMATION STORAGE AND RETRIEVAL SYSTEM, WITHOUT THE WRITTEN PERMISSION OF C&K ARCHITECTS INTERIORS. © 2018 C&K ARCHITECTS INTERIORS. ALL RIGHTS RESERVED.