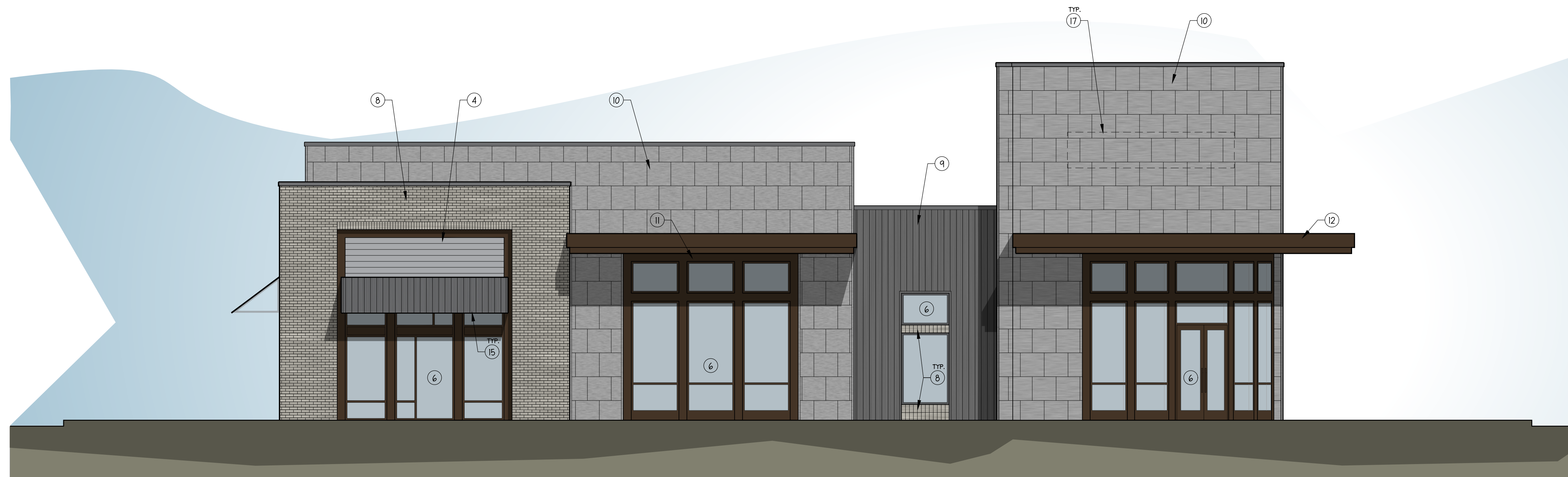


HAMLIN GROVES TRAIL COMMERCIAL OUTPARCEL



1 SOUTH ELEVATION - BUILDING 2
SCALE: 3/16" = 1'-0"



2 NORTH ELEVATION - BUILDING 2
SCALE: 3/16" = 1'-0"

KEYNOTES	
1.	ALUMINUM COMPOSITE MATERIAL WALL PANELS.
2.	NATURAL THIN STONE VENEER.
3.	FABRIC AWNING.
4.	COMPOSITE HORIZONTAL SIDING.
5.	DECORATIVE ALUMINUM LOUVERED SHUTTER.
6.	GLAZED ALUMINUM STOREFRONT SYSTEM.
7.	STUCCO FINISH.
8.	BRICK VENEER.
9.	CORRUGATED METAL PANELS.
10.	SQUARE, MODULAR METAL PANEL WALL SYSTEM.
11.	BRAKE METAL SIDING.
12.	ALUMINUM COMPOSITE MATERIAL CANOPY.
13.	METAL BLADE AWNING.
14.	CAST STONE VENEER.
15.	CORRUGATED METAL AWNING.
16.	COMPOSITE CANOPY W/ STRUCTURAL WOOD SUPPORT BRACKETS.
17.	POTENTIAL SIGNAGE PLACEMENT AREA. FINAL SIGNAGE DESIGN TO BE PROVIDED BY OTHERS AND SUBJECT TO COUNTY APPROVAL.
18.	HOLLOW METAL DOOR AND FRAME, PAINTED.

PROJECT ADDRESS: HAMLIN GROVES TRAIL - HAMLIN TOWN CENTER

PROJECT NUMBER: 18057

CLIENT NAME: RAVE COMMERCIAL

4221 WESTBOY SCOUT BLVD., SUITE 150 • TAMPA, FL 33607-5743 • VOICE: 813.882.2000
280 WEST CENTRAL AVE. • WINTER HAVEN, FL 33880 • VOICE: 863.577.2054 WEBSITE: WWW.CK-ARCH.COM AAC001629

REVISIONS: DATE: 01.15.2019

SHEET NO:

A-2.1

DATE: 1/21/2019 3:12:41 PM, USER: JEREMY HAGHERS, PLOTS/SCALE: H:\FILE PATH\18057_HAMLIN TOWN CENTER_OUTPARCEL\BASE\VELE_N001_RENDERING.DWG

CONFIDENTIAL NOTICE: THE INFORMATION CONTAINED HEREIN IS PROPRIETARY AND CONFIDENTIAL INFORMATION OF C&K ARCHITECTS INTERIORS. IT IS TO BE USED ONLY FOR THE PROJECT AND SITE SPECIFICALLY IDENTIFIED HEREIN. IT IS NOT TO BE REPRODUCED, COPIED, OR TRANSMITTED IN ANY FORM OR BY ANY MEANS, ELECTRONIC OR MECHANICAL, INCLUDING PHOTOCOPYING, RECORDING, OR BY ANY INFORMATION STORAGE AND RETRIEVAL SYSTEM, WITHOUT THE WRITTEN PERMISSION OF C&K ARCHITECTS INTERIORS. PLEASE CONTACT C&K ARCHITECTS INTERIORS AT 813.882.2000 FOR MORE INFORMATION.