

# WATERGRASS RETAIL PLAZA

Near Epperson and Watergrass

7800 Curley Road, Wesley Chapel, FL 33545

1,600 SF to 11,963 SF (Divisible)

Space for Lease



## AVAILABLE:

1,600 SF to 11,963 SF (Divisible)

## USES:

Office & Medical Office

## LEASE RATE:

Call for details

## LOCATION:

The outparcel is located close to Epperson and Watergrass communities. The site is convenient and accessible to Interstate 75.

## SUMMARY:

Our new +/- 2 Acre mixed use development.

Leasing up to 11,963 SF



5331 Primrose Lake Cir.  
Suite #110, Tampa, FL 33647

813.750.7581 Office  
rave@ravecommercial.com  
[www.ravecommercial.com](http://www.ravecommercial.com)

SPACE FOR LEASE

# WATERGRASS RETAIL PLAZA

## Near Epperson and Watergrass

7800 Curley Rd, Wesley Chapel, FL 33545

1,600 SF to 11,963 SF (Divisible)

Space for Lease

[Click Here For Location](#)

### YEAR BUILT / RENOVATED:

2024

### LOT SIZE:

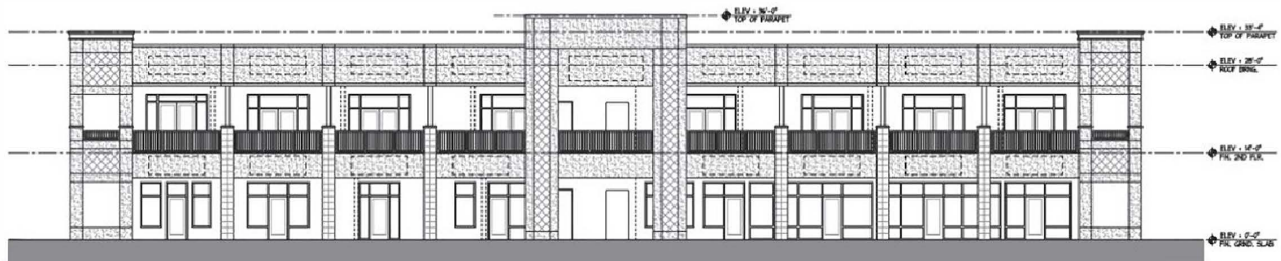
+/- 2 Acres

### PROPERTY INFO:

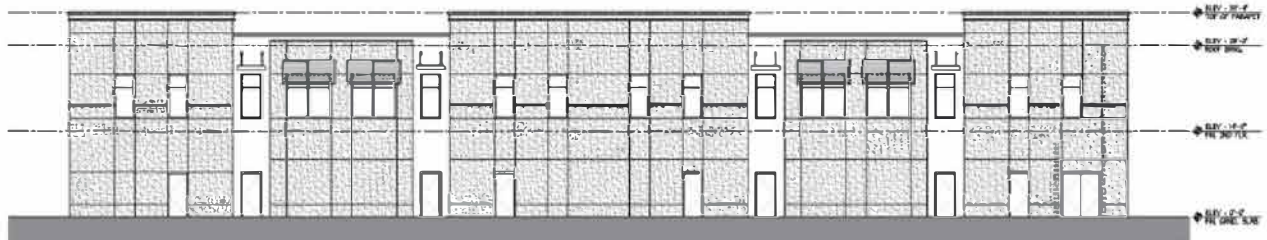
- MPUD Zoning
- Easy Ingress & Egress
- Two – Story Retail Plaza
- Over 6,000 homes built within the Wesley Chapel MPUD (about one mile Radius)
- Thousands of homes built or under construction immediately surrounding the Wesley Chapel MPUD
- Developed sites will service the residence of Epperson, Watergrass and other surrounding developments

### Coming soon:

- Credit Union
- **Baycare Center & John Hopkins All Children's Hospital**
- Amazing Explorers Daycare
- Two Apartment complexes with each about 400 units
- Near by: Florida Medical Clinic & Kirkland Ranch Academy



FRONT ELEVATION (NORTHWEST)  
SCALE: 1/4" = 1'-0"  
CURLEY INC. PREPARED



REAR ELEVATION (SOUTHEAST)  
SCALE: 1/4" = 1'-0"  
WHITE INC. PREPARED



5331 Primrose Lake Cir,  
Suite #110, Tampa, FL 33647

813.750.7581 Office  
[rave@ravecommercial.com](mailto:rave@ravecommercial.com)  
[www.ravecommercial.com](http://www.ravecommercial.com)

# WATERGRASS RETAIL PLAZA

Near Epperson and Watergrass

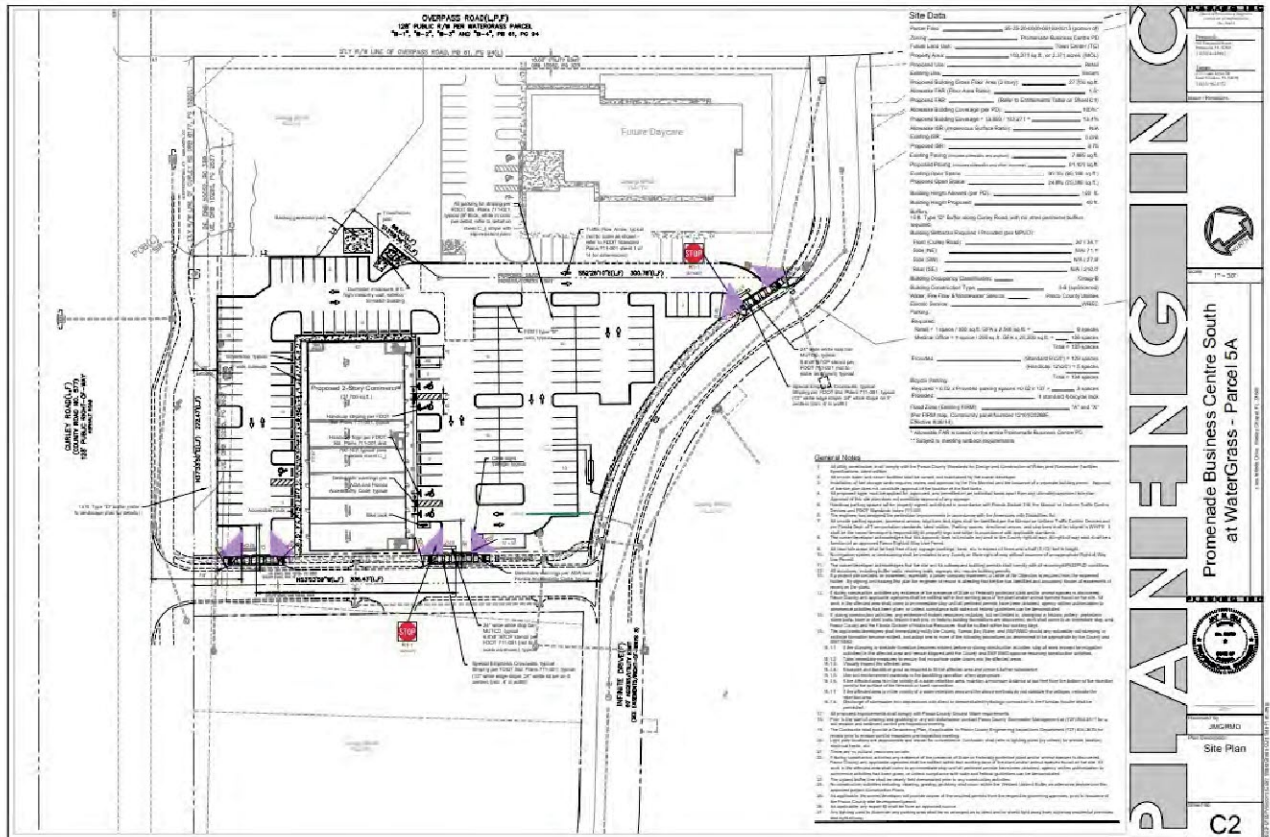
7800 Curley Road, Wesley Chapel, FL 33545

1,600 SF to 11,963 SF (Divisible)

[Click Here For Location](#)

Space for Lease

## SITE PLAN



5331 Primrose Lake Cir, Suite #110, Tampa, FL 33647

813.750.7581 Office  
[rave@ravecommercial.com](mailto:rave@ravecommercial.com)  
[www.ravecommercial.com](http://www.ravecommercial.com)

# WATERGRASS RETAIL PLAZA

7800 Curley Road, Wesley Chapel, FL 33545

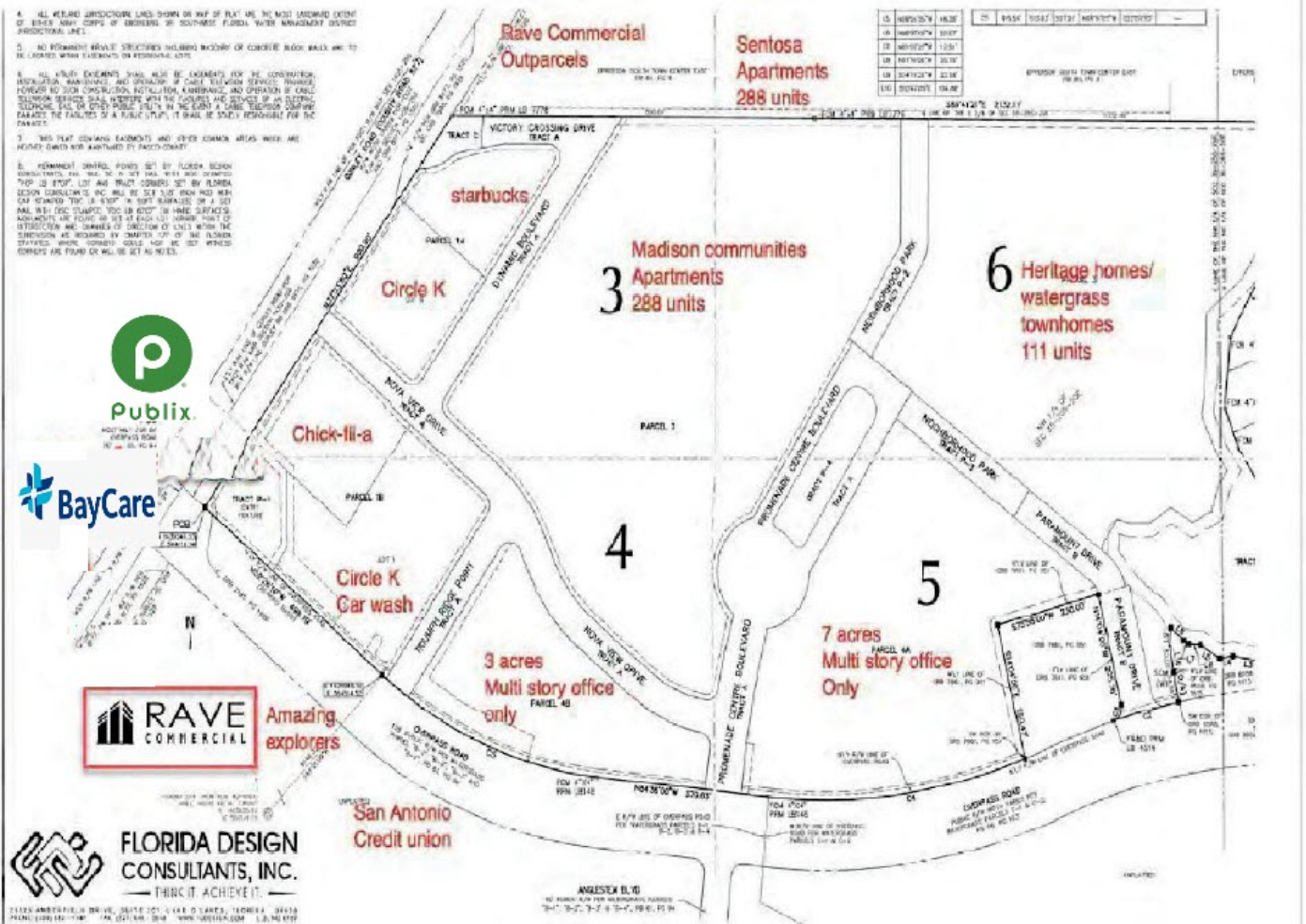
## Near Epperson and Watergrass

1,600 SF to 11,963 SF (Divisible)

[Click Here For Location](#)

Space for Lease

### SITE MAP



5331 Primrose Lake Cir, Suite #110, Tampa, FL 33647

813.750.7581 Office  
[rave@ravecommercial.com](mailto:rave@ravecommercial.com)  
[www.ravecommercial.com](http://www.ravecommercial.com)

# WATERGRASS RETAIL PLAZA

## Near Epperson and Watergrass

7800 Curley Road, Wesley Chapel, FL 33545

1,600 SF to 11,963 SF (Divisible)

[Click Here For Location](#)

Space for Lease

## LOCATION MAP



5331 Primrose Lake Cir,  
Suite #110, Tampa, FL 33647

813.750.7581 Office  
[rave@ravecommercial.com](mailto:rave@ravecommercial.com)  
[www.ravecommercial.com](http://www.ravecommercial.com)

# WATERGRASS RETAIL PLAZA

Near Epperson and Watergrass

1,600 SF to 11,963 SF (Divisible)

7800 Curley Road,  
Wesley Chapel, FL 33545

[Click Here For Location](#)

## DEVELOPMENT DETAILS



5331 Primrose Lake Cir,  
Suite #110, Tampa, FL 33647

813.750.7581 Office  
[rave@ravecommercial.com](mailto:rave@ravecommercial.com)  
[www.ravecommercial.com](http://www.ravecommercial.com)